

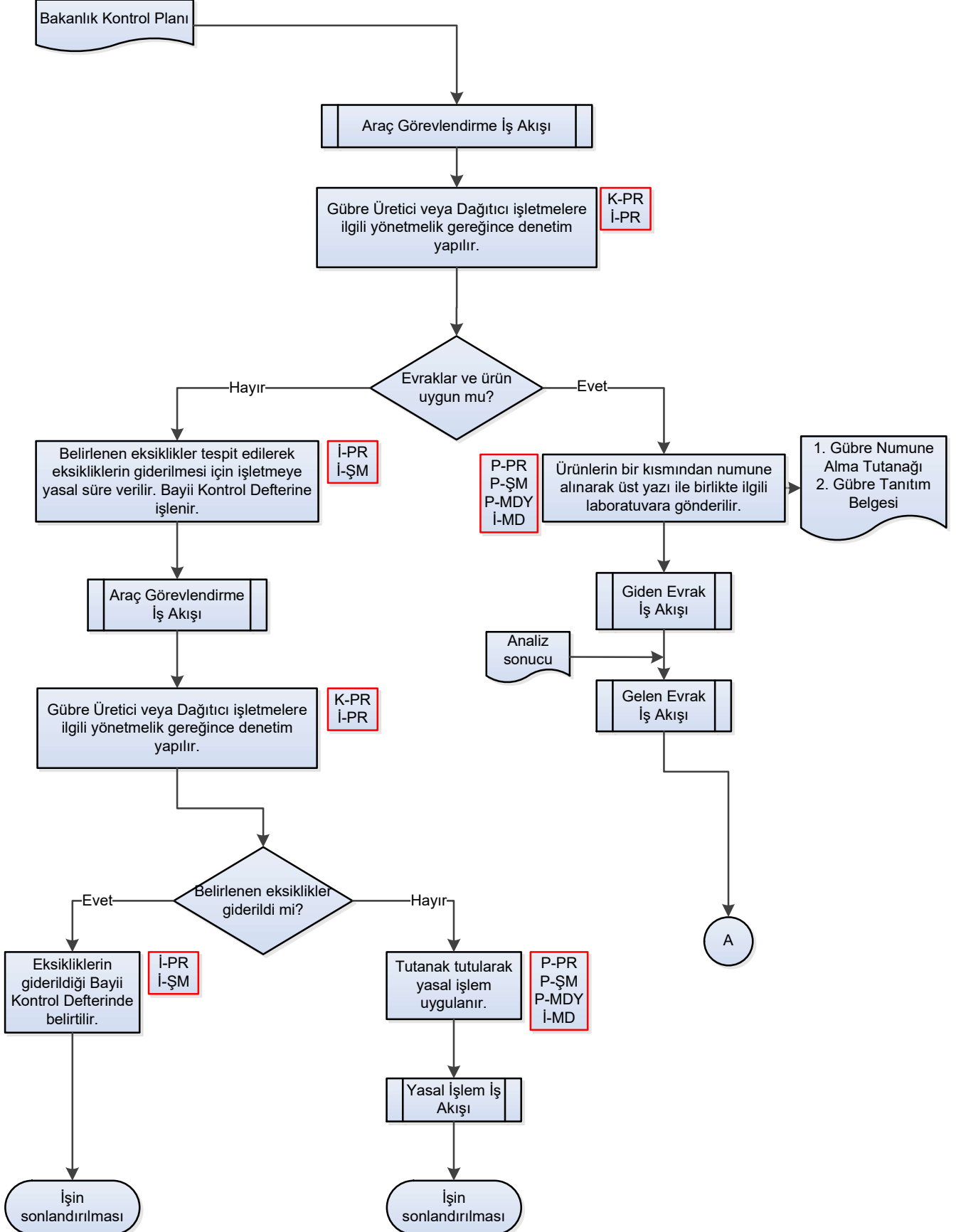


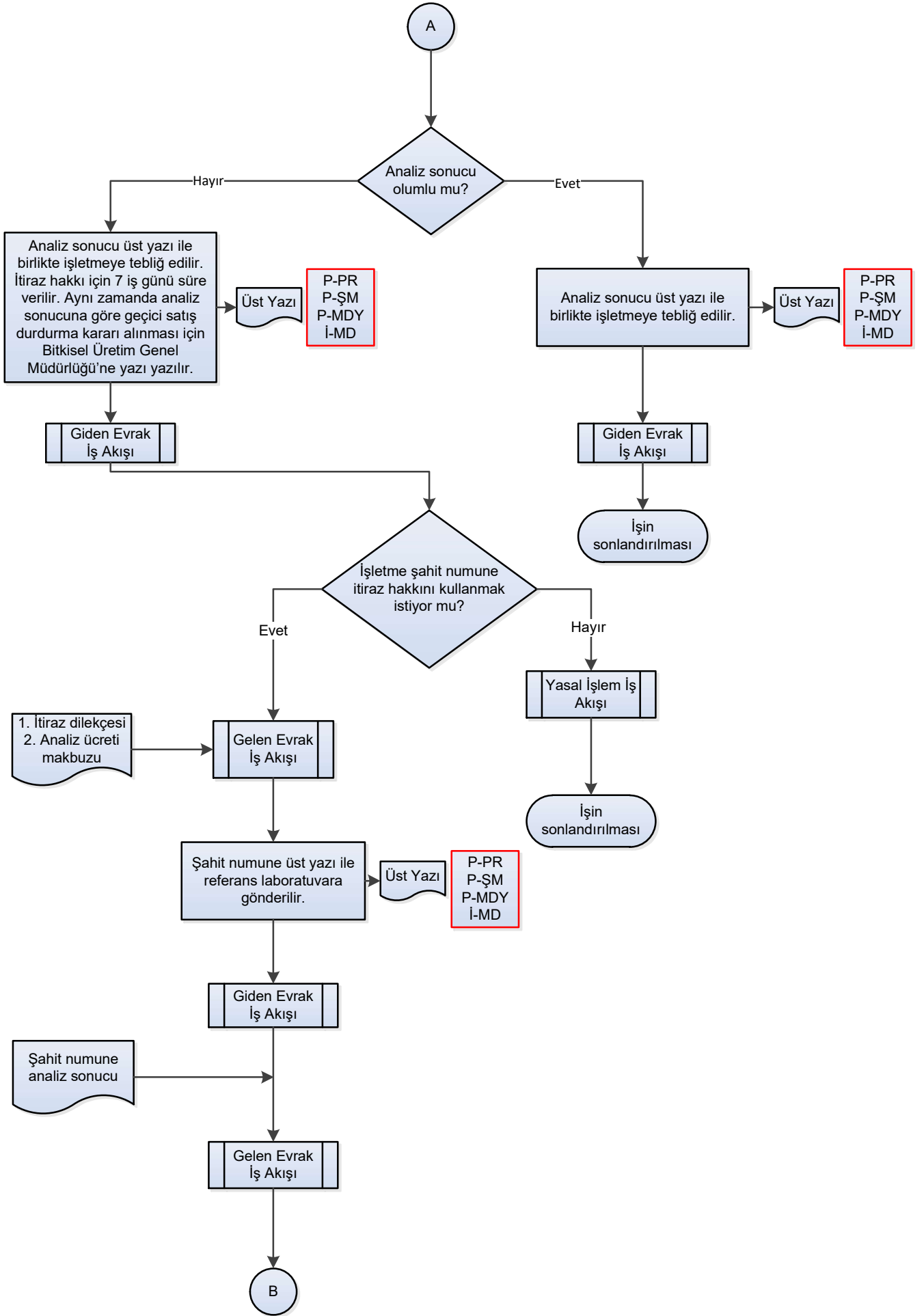
İŞ AKIŞ ŞEMASI

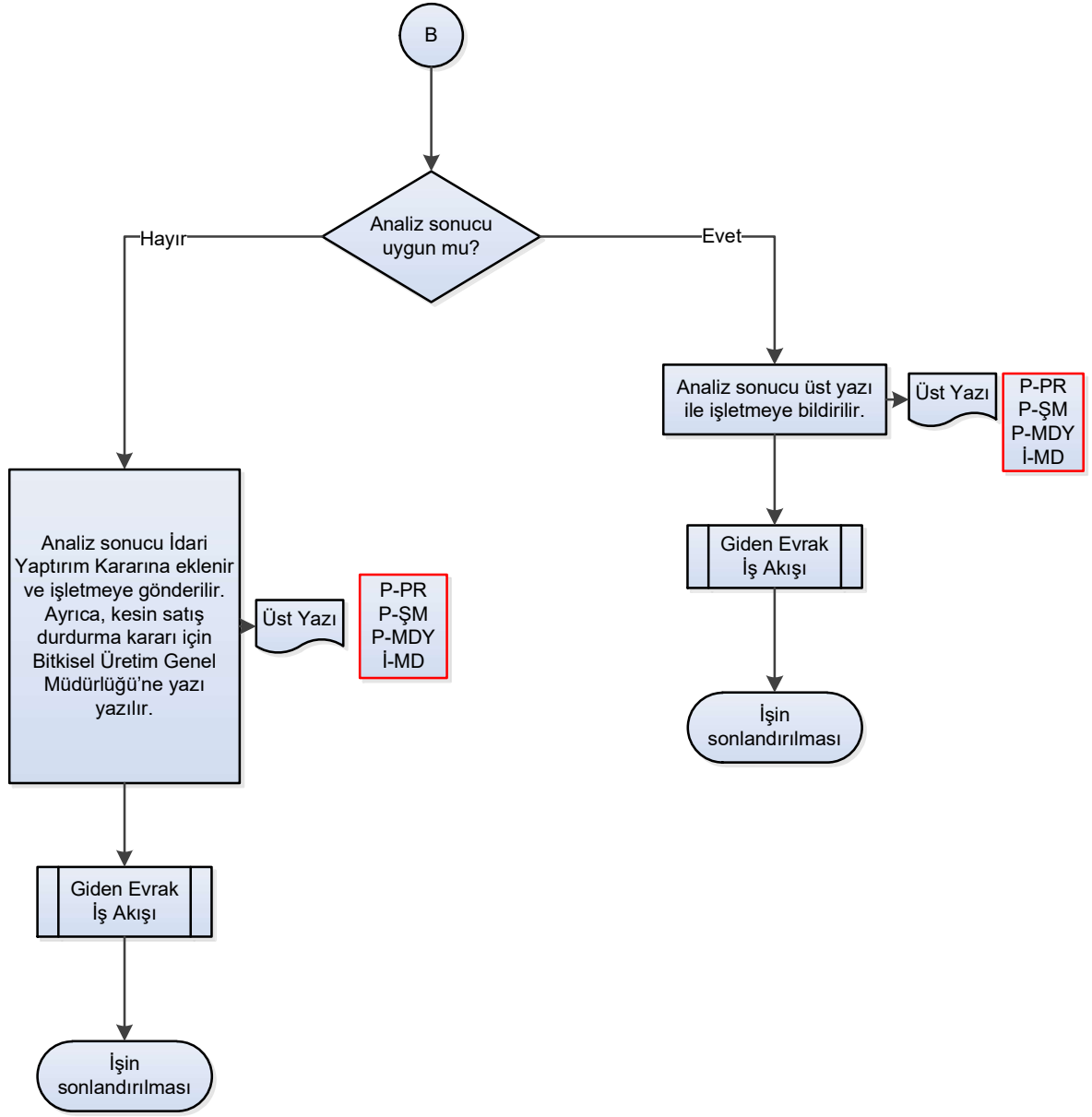
Revizyon No:

Revizyon Tarihi:

BİRİM:	BİTKİSEL ÜRETİM VE BİTKİ SAĞLIĞI ŞUBE MÜDÜRLÜĞÜ
ŞEMA NO:	GTHB.39.İLM.İKS/JYS.İAŞ.02/04
ŞEMA ADI:	GÜBRE PİYASASI DENETİMİ VE NUMUNE ALMA







HAZIRLAYAN	ONAYLAYAN
RAMAZAN EMRAH YALÇIN	FUNDA EYLEM ÖZEL